

Los Angeles Unified School District

Inter-Office Correspondence

To: All Staff
LAUSD Administrative Headquarters

Date: Updated March 3, 2016

From: Office of the Building
LAUSD Administrative Headquarters

RE: **Visitors to LAUSD Administrative Headquarters -
Parking Accommodations for those with Disabilities and
Accommodations for Oversized Vehicles**

There are two primary parking locations for visitors with disabilities. Please see the attached maps for location and entrance information. Garage hours are currently from 5:30AM to 7:00PM, Monday through Friday, excluding holidays and District shutdown days.

- I. LAUSD Administrative Headquarters: Physically challenged visitors may park at the LAUSD Administrative Headquarters parking garage (333 South Beaudry Avenue – enter off 3rd Street). Such visitors should have appropriate disabled placards or DMV plates. Upon arrival at the Headquarters garage, disabled visitors will need to display their current DMV placard or DMV plates and will be logged in by LA School Police. ***The maximum vehicle height for the garage at LAUSD Administrative Headquarters is 6’3”.***
- II. Visconti Garage: The Visconti garage (1221 West Third Street – enter off of Miramar) is available for all District visitors and has designated disabled parking spots on the entrance level. ***The height limit is 7’2”.*** Visitors should pull a parking ticket and obtain a free validation within the department being visited.

For District staff with disabilities assigned to work at LAUSD Administrative Headquarters, or for any other questions or concerns, please contact the Office of the Building at (213) 241-1320 to arrange for parking accommodations.

Parking Access for Visitors with Disabilities

LAUSD Administrative Headquarters
333 South Beaudry Avenue, Los Angeles, CA 90017

Visconti Garage
Enter on Miramar just
north of Boylston

Van Accessible
Visitor Parking

Standard Vehicle
Accessible Parking
for Visitors with
Disabilities
Press intercom button and
show handicap placard to
obtain access



LAUSD
Administrative
Headquarters

Entrance to Offices

Board Room

Westlake

Pedestrian Access to
Offices and Board Room

S. Boylston St.

W. 4th. Street

W. 3rd. Street

S. Beaudry Ave.

Visconti
Parking Garage

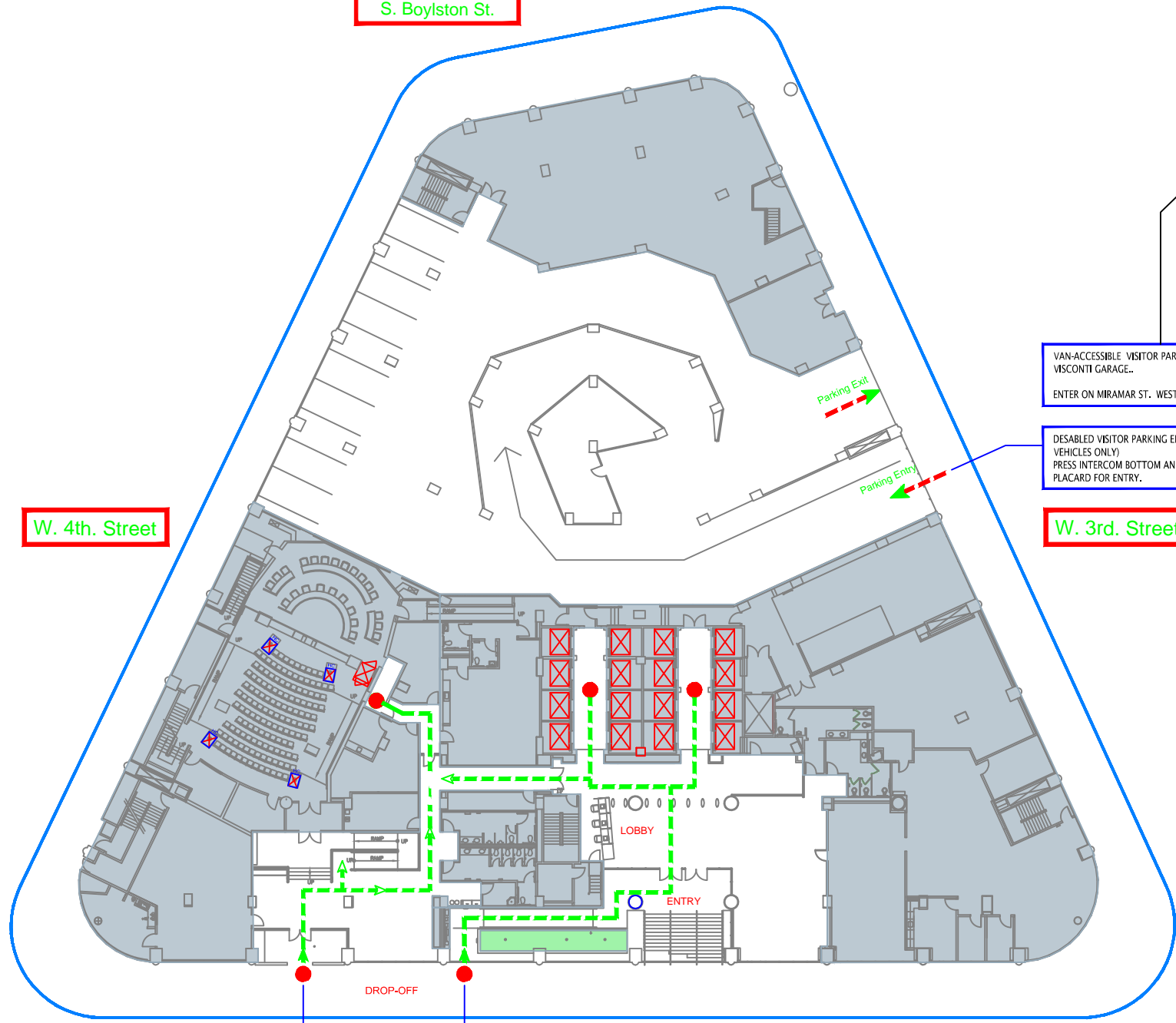
VAN-ACCESSIBLE VISITOR PARKING AVAILABLE AT VISCONTI GARAGE.
ENTER ON MIRAMAR ST. WEST OF BOYLSTON ST.

DISABLED VISITOR PARKING ENTRANCE (STANDARD VEHICLES ONLY)
PRESS INTERCOM BOTTOM AND SHOW DISABLED PLACARD FOR ENTRY.

PEDESTRIAN ACCESSIBLE ENTRANCE TO BOARD ROOM

PEDESTRIAN ACCESSIBLE ENTRANCE TO HEADQUARTERS OFFICES

First Floor



Parking Exit

Parking Entry

LOBBY

ENTRY

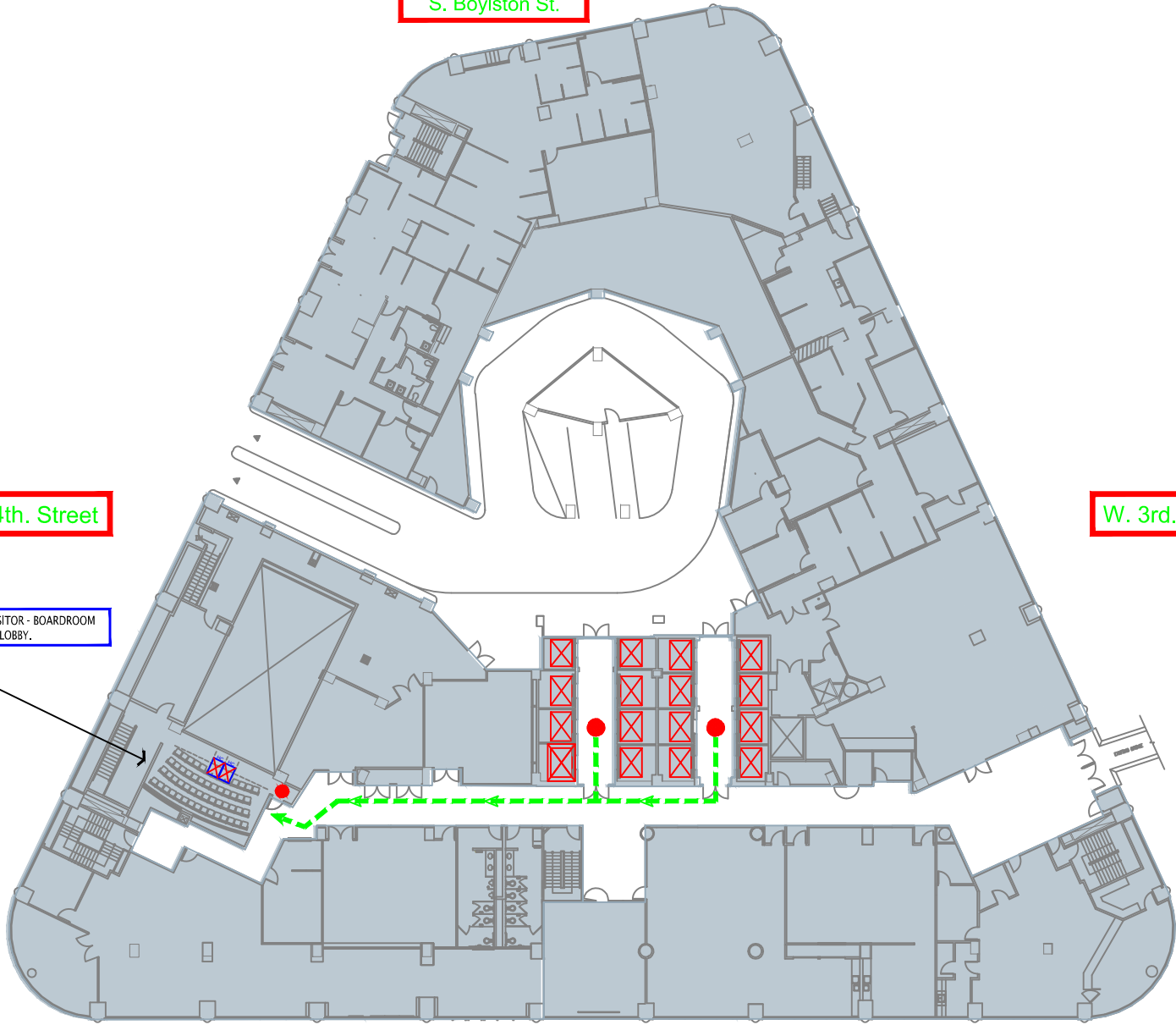
DROP-OFF

S. Boylston St.

W. 4th. Street

W. 3rd. Street

2nd. FLOOR DESABLED VISITOR - BOARDROOM
ACCESS FROM ELEVATOR LOBBY.



S. Beaudry Ave.

Second Floor ⊕